



LADYWOOD SCHOOL

NOVEMBER 2025 NEWSLETTER

Dear Parents and carers

I am delighted to share that following an external recruitment process, I have now been appointed as the permanent Headteacher of Ladywood. Having worked at Ladywood for over 20 years, it is an honour and a privilege to step into this role within a community that means so much to me. I am incredibly proud of our pupils, staff, and families, and I look forward to continuing our journey together - building on our strong foundations while embracing new opportunities that help every child flourish.



Thank you to all the families who joined us for our Family Fireside Wellbeing Week. It was a wonderful success and a great opportunity to spend some quality time together. We loved welcoming parents and carers into school to roast marshmallows around the campfire and to join in with our music and dance workshops. The laughter and smiles throughout the week made it so special and we very much look forward to offering more opportunities like this in the future.

We value the voices of our families and want to create even more ways for you to be involved in shaping the future of our school. Following the recent parent survey, we would like to invite parents and carers to join the Friends of Ladywood team. Each term, we will host a short meeting before one of our family events for anyone who would like to share their ideas, get involved, or simply hear more about what's happening in school. If you would prefer to just attend the event, that is fine but your views and support make a real difference, and we warmly welcome everyone who wishes to take part.

Thank you as always for everyone's amazing support,

Lynsey

Upcoming Events

- ★ 5th December - Family Wreath Making - see poster below.
- ★ Week beginning 8th December - Christmas Performance Week - further information to follow.
- ★ 12th December - Christmas Fair - see poster below.
- ★ Friday 19th December - School closes for Christmas at the **earlier time of 2.00 pm**



Reminder
*School is closed
on Friday 28th
November*



Friends of Ladywood invite you to a Festive
Family Wreath making!



Friday 5th December 9:15 - 11:00

9:15- Time to share ideas and hear more
about what's happening in school

9:45- wreath making session

(Please get in touch with the office to
book a space - limited spaces available)

Fireside Family Fun!

Thank you so much to everyone who attended our Fireside Family Fun sessions. The children had a lovely time singing, dancing, making popcorn and taking part in forest activities.





Our Christmas Fair this year is Friday 12th December 5pm - 6:30pm

The children are also invited to come into school in non-uniform on the following dates:

Thursday 27th November - we kindly ask for donations towards our tombola

Friday 5th December - we kindly ask for teddy bear donations

Thank you.





Exciting News: Join us on our new Facebook page!



New Facebook account, Join via QR code



Social Media at Ladywood

Join us on our new
Facebook page!



Twitter



Instagram



© Woodbridge Trust 2023. All rights reserved. Ladywood Forest is a registered charity.

Welcome

A huge welcome to Firoza Zaeem, Hayley Riding, Megan Bracey, Alex Wilson and Jugar Pudo who have all joined the Ladywood team.



Happy Retirement

We said goodbye to Caroline Molyneux, wishing her all the very best in her retirement.



Important Information - Transport

For all parents who use the transport service to pick up/drop off their child from school - if for some reason you are dropping off or collecting yourself, please can you contact transport directly to let them know as well as confirming with school.

Thank you for your co-operation.

IMPORTANT INFORMATION - ALLERGY AWARE

A reminder that we are an 'Allergy Aware' school and therefore nuts should be avoided at all costs.

We have a number of children who are severely allergic to nuts and therefore these shouldn't be coming into school in any form.

Thank you for your co-operation.

Allergy Aware School



Medication Reminder

A gentle reminder that any medication that needs to come into school needs to be brought by a parent/carer to Reception. Please do not send on transport. We need this medication signing into school and a medication administration form filling out by family.

Thank you.



Attendance Awareness for Families

Ladywood is committed to promoting and maintaining high levels of attendance and punctuality, to ensure the best outcomes for all our children.

It is therefore a Parent's/Carer's responsibility to:

- Ensure your child is in school by 9:30 am and picked up no earlier than 2:30 pm unless you have an appointment (please arrange appointments outside school hours where possible)
- Report absences by 8:30 am and provide medical evidence when required
- Provide the setting with more than 1 emergency contact number

Authorised Absence Includes:

- Illness and medical/dental appointments (please make school aware of these in advance)
- Religious observance for 1 day
- Other possible 'exceptional circumstances' where the Head may grant term-time holiday. However if this is unauthorised due to attendance then a fine may be incurred.

Leave of Absence MUST be completed at least 2 weeks prior to a holiday or this will be considered UNAUTHORISED. We cannot complete this paperwork after the trip has occurred.

Unauthorised Absence could incur a Penalty Notice and fines starting from £80 up to £160. Further unauthorised absence could lead to Legal Action.

Unexplained Absence - where any pupil we expect to attend school does not attend, or stops attending, without reason, the school will:

- Day 1 and/or Day 2: Contact parents/carers by telephone to confirm a pupil's absence
- Day 3: If a pupil is still absent, and we have been unable to contact a parent/carer, a home visit will be completed.

If your child's attendance falls below 90% you may be notified in writing.

If your child's attendance falls below 80% you may be offered an attendance review meeting to discuss any support required.

We endeavour to support all our children in having a positive attendance. Should you require any further support please do not hesitate to contact school and we would be happy to work with yourselves to improve attendance.

LEARNING THROUGH MOTION

Please see information below for FREE Sensory Sports Sessions for children.



Move, Play, Develop & Explore!





Free SEND Sensory Sports Sessions for Children



At Learning Through Motion,
we use sport and sensory
play to help children build
confidence, coordination and
connection all whilst having
fun in a safe, inclusive
environment.

 Sunday 2nd November
Sunday 16th November
Sunday 21st November
Sunday 30th November

 Group 1 - 11:00-11:30am
Group 2 - 11:30-12:00pm

 Sharples High School,
Hill Cot Road,
BL1 8SN

Contact us today for further
information or to book your
place!

Email - Info@learningthroughmotion.co.uk
Phone - 07356074072



LEARNING_THROUGH_MOTION



Confidence



Coordination



Social Skills



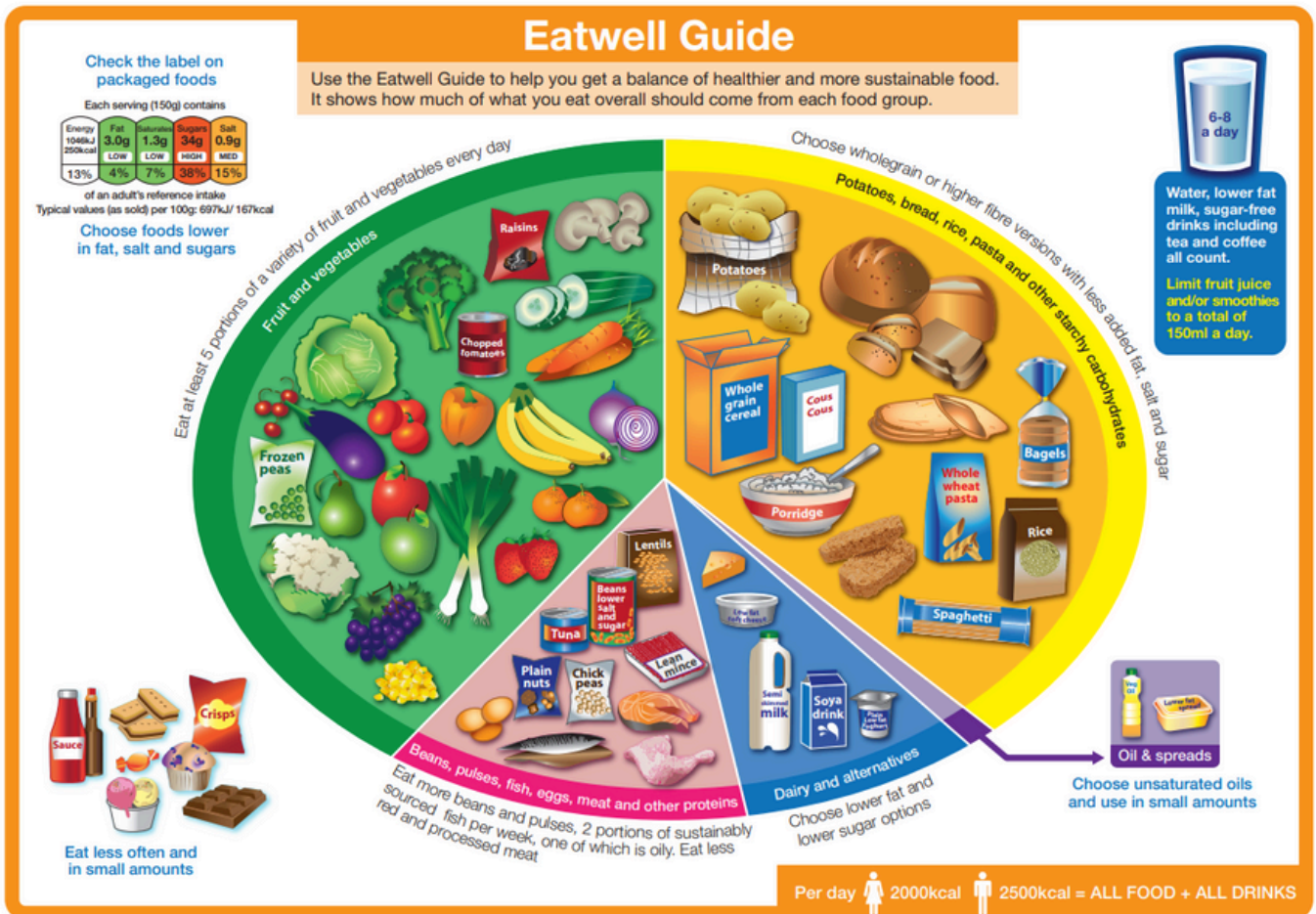
Communication



Food and Nutrition at Ladywood

At Ladywood we encourage health eating at school.

Please see the NHS Eatwell Guide Principle poster below.



The Eatwell Guide shows how much of what we eat overall should come from each food group to achieve a healthy, balanced diet.

You do not need to achieve this balance with every meal, but it's good to try to get the balance right over a day or even a week.

Please click on the link below for further information.

<https://www.nhs.uk/live-well/eat-well/food-guidelines-and-food-labels/the-eatwell-guide/>

Operation Encompass

Ladywood School is in partnership with Bolton Safeguarding Board and Greater Manchester Police in a project called “Bolton Encompass”. The project is designed to provide support for children who may be impacted on by domestic violence. Information from Encompass will be shared with school who will ensure that appropriate supportive strategies are put in place.

To access the Operation Encompass website, please click on the link below: <https://www.operationencompass.org/>



Operation Encompass is a national scheme that operates jointly between schools and all police forces.

“ Children who live in homes where there is domestic abuse, or who experience domestic abuse in their own teenage relationships, can be negatively impacted by this experience. ”

“ Children who experience domestic abuse are recognised as victims of domestic abuse in their own right! ”

“ We have ensured that a member of our staff, (Designated Safeguarding Lead) known as a Key Adult, has been trained about Operation Encompass procedures. This allows us to use the information that has been confidentially shared with us by the police, to understand how a child may be impacted by domestic abuse and to then offer support to the child/ren in our care. ”

“ Operation Encompass means that our school will be told, prior to the start of the next school day, when police have attended an incident of domestic abuse where there is a child or young person who attends our school who is related to any of those involved in the incident. ”

“ This information means that we can understand a child’s behaviour and support that child in whatever way they may need or want. ”

“ We are keen to offer the very best support possible to all our pupils and we believe that being part of Operation Encompass helps us to do this. ”

1 Domestic Abuse Act 2021

www.operationencompass.org

SEND Local Offer Website

Are you aware what’s available for your child? The SEND Local Offer is there to provide a single point for information to help families access details about services available to them, and offer guidance in multiple areas. Please click on the link below for further information.

<https://www.bolton.gov.uk/sendlocaloffer/>

HOLIDAY LIST 2025-2026 PUPILS



September 2025							
Wk	Mo	Tu	We	Th	Fr	Sa	Su
36	1	2	3	4	5	6	7
37	8	9	10	11	12	13	14
38	15	16	17	18	19	20	21
39	22	23	24	25	26	27	28
40	29	30					

October 2025							
Wk	Mo	Tu	We	Th	Fr	Sa	Su
40			1	2	3	4	5
41	6	7	8	9	10	11	12
42	13	14	15	16	17	18	19
43	20	21	22	23	24	25	26
44	27	28	29	30	31		

November 2025							
Wk	Mo	Tu	We	Th	Fr	Sa	Su
44						1	2
45	3	4	5	6	7	8	9
46	10	11	12	13	14	15	16
47	17	18	19	20	21	22	23
48	24	25	26	27	28	29	30

December 2025							
Wk	Mo	Tu	We	Th	Fr	Sa	Su
49	1	2	3	4	5	6	7
50	8	9	10	11	12	13	14
51	15	16	17	18	19	20	21
52	22	23	24	25	26	27	28
1	29	30	31				

January 2026							
Wk	Mo	Tu	We	Th	Fr	Sa	Su
1				1	2	3	4
2	5	6	7	8	9	10	11
3	12	13	14	15	16	17	18
4	19	20	21	22	23	24	25
5	26	27	28	29	30	31	

February 2026							
Wk	Mo	Tu	We	Th	Fr	Sa	Su
5							1
6	2	3	4	5	6	7	8
7	9	10	11	12	13	14	15
8	16	17	18	19	20	21	22
9	23	24	25	26	27	28	

March 2026							
Wk	Mo	Tu	We	Th	Fr	Sa	Su
9							1
10	2	3	4	5	6	7	8
11	9	10	11	12	13	14	15
12	16	17	18	19	20	21	22
13	23	24	25	26	27	28	29
14	30	31					

April 2026							
Wk	Mo	Tu	We	Th	Fr	Sa	Su
14			1	2	3	4	5
15	6	7	8	9	10	11	12
16	13	14	15	16	17	18	19
17	20	21	22	23	24	25	26
18	27	28	29	30			

May 2026							
Wk	Mo	Tu	We	Th	Fr	Sa	Su
18					1	2	3
19	4	5	6	7	8	9	10
20	11	12	13	14	15	16	17
21	18	19	20	21	22	23	24
22	25	26	27	28	29	30	31

June 2026							
Wk	Mo	Tu	We	Th	Fr	Sa	Su
23	1	2	3	4	5	6	7
24	8	9	10	11	12	13	14
25	15	16	17	18	19	20	21
26	22	23	24	25	26	27	28
27	29	30					

July 2026							
Wk	Mo	Tu	We	Th	Fr	Sa	Su
27			1	2	3	4	5
28	6	7	8	9	10	11	12
29	13	14	15	16	17	18	19
30	20	21	22	23	24	25	26
31	27	28	29	30	31		

August 2026							
Wk	Mo	Tu	We	Th	Fr	Sa	Su
31						1	2
32	3	4	5	6	7	8	9
33	10	11	12	13	14	15	16
34	17	18	19	20	21	22	23
35	24	25	26	27	28	29	30
36	31						

The dates that are shaded in Gold are the days children and young people are not in school.

The dates written in Red are Bank Holidays



Woodbridge Trust Holiday List 2026-2027

September 2026							
Wk	Mo	Tu	We	Th	Fr	Sa	Su
36		1	2	3	4	5	6
37	7	8	9	10	11	12	13
38	14	15	16	17	18	19	20
39	21	22	23	24	25	26	27
40	28	29	30				

October 2026							
Wk	Mo	Tu	We	Th	Fr	Sa	Su
40				1	2	3	4
41	5	6	7	8	9	10	11
42	12	13	14	15	16	17	18
43	19	20	21	22	23	24	25
44	26	27	28	29	30	31	

November 2026							
Wk	Mo	Tu	We	Th	Fr	Sa	Su
44							1
45	2	3	4	5	6	7	8
46	9	10	11	12	13	14	15
47	16	17	18	19	20	21	22
48	23	24	25	26	27	28	29
49	30						

December 2026							
Wk	Mo	Tu	We	Th	Fr	Sa	Su
49		1	2	3	4	5	6
50	7	8	9	10	11	12	13
51	14	15	16	17	18	19	20
52	21	22	23	24	25	26	27
53	28	29	30	31			

January 2027							
Wk	Mo	Tu	We	Th	Fr	Sa	Su
53					1	2	3
1	4	5	6	7	8	9	10
2	11	12	13	14	15	16	17
3	18	19	20	21	22	23	24
4	25	26	27	28	29	30	31

February 2027							
Wk	Mo	Tu	We	Th	Fr	Sa	Su
5	1	2	3	4	5	6	7
6	8	9	10	11	12	13	14
7	15	16	17	18	19	20	21
8	22	23	24	25	26	27	28

March 2027							
Wk	Mo	Tu	We	Th	Fr	Sa	Su
9	1	2	3	4	5	6	7
10	8	9	10	11	12	13	14
11	15	16	17	18	19	20	21
12	22	23	24	25	26	27	28
13	29	30	31				

April 2027							
Wk	Mo	Tu	We	Th	Fr	Sa	Su
13				1	2	3	4
14	5	6	7	8	9	10	11
15	12	13	14	15	16	17	18
16	19	20	21	22	23	24	25
17	26	27	28	29	30		

May 2027							
Wk	Mo	Tu	We	Th	Fr	Sa	Su
17						1	2
18	3	4	5	6	7	8	9
19	10	11	12	13	14	15	16
20	17	18	19	20	21	22	23
21	24	25	26	27	28	29	30
22	31						

June 2027							
Wk	Mo	Tu	We	Th	Fr	Sa	Su
22		1	2	3	4	5	6
23	7	8	9	10	11	12	13
24	14	15	16	17	18	19	20
25	21	22	23	24	25	26	27
26	28	29	30				

July 2027							
Wk	Mo	Tu	We	Th	Fr	Sa	Su
26				1	2	3	4
27	5	6	7	8	9	10	11
28	12	13	14	15	16	17	18
29	19	20	21	22	23	24	25
30	26	27	28	29	30	31	

August 2027							
Wk	Mo	Tu	We	Th	Fr	Sa	Su
30							1
31	2	3	4	5	6	7	8
32	9	10	11	12	13	14	15
33	16	17	18	19	20	21	22
34	23	24	25	26	27	28	29
35	30	31					

The dates that are shaded in Gold are the days children and young people are not in school.
 The dates written in Red are Bank Holiday

