



LADYWOOD SCHOOL

APRIL 2025 NEWSLETTER

Dear Parents and Carers,

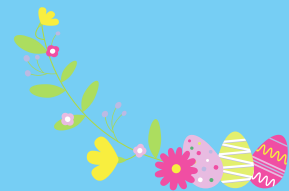
We've had a fantastic start to the Summer Term! Last week, our Year 6 children embarked on their residential trip to Bendrigg, where they (and our staff) had an incredible time. They took part in a variety of exciting activities, including canoeing, wall climbing, and campfires. Their enthusiasm and 'Believe and Achieve' attitude were truly inspiring—well done, everyone!

A huge thank you also goes to our dedicated staff, who generously gave up their time to make this trip such a memorable experience. Your support is greatly appreciated!

I hope you have managed to attend some of our lovely events this term - we have enjoyed seeing so many families attend our coffee mornings, class assemblies or our Easter Bingo!

Wishing everyone a lovely Easter break

Susan and everyone at Ladywood



Upcoming Events

- ★ Friday 4th April - school finishes for Easter Holidays
- ★ 2nd July - Parents Evening - further information to follow

Reminder

Please note school closes at the usual time on Friday 4th April and re-opens on Tuesday 22nd April

Parent Partner

Sarah Travis is the School's Parent Partner and is able to provide guidance, advice and support for parents/carers.

Please note change of days - Sarah is available all day Monday, Tuesday, Wednesday and Thursday.

Should you require any help then please contact Sarah either on the school office number:

01204 333400 OR via email parentpartner@ladywood.bolton.sch.uk



Visitor Policy

The Visitor Code of Conduct Policy is now available to view. This can be found on our school website

<https://www.ladywoodschool.com/policies>

Goodbye & Good Luck

We are saying goodbye to Colin Cywinski, Claire Goulding and Ashley Fletcher. Wishing them all the very best for the future.



Gardening Gang

Congratulations to the amazing children in Gardening Gang for achieving the Woodland Trust Bronze Award.

This involved recycling, planting an apple orchard and visiting the forest.

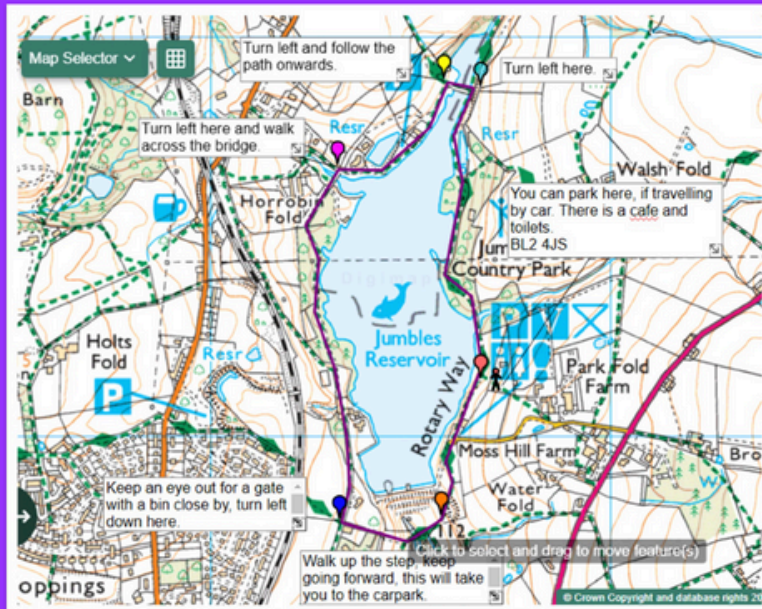


Easter Geography Walk

The Geography team have put together a map of two lovely walks which you may wish to try with your child over the Easter holidays - see maps below.

Please note the walks are outside and some near roads and water, so children will need adult supervision at all times

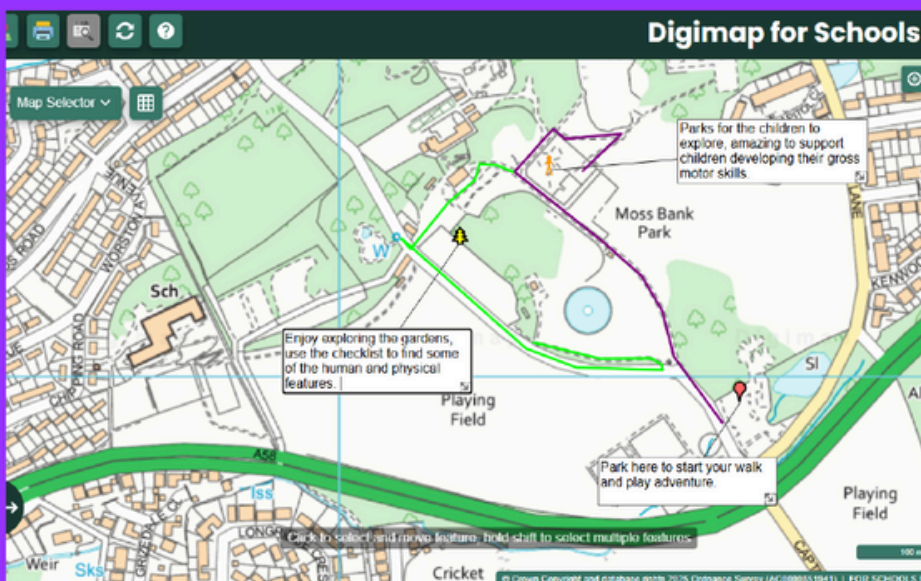
1. Find the café near the car park. Follow the foot path down towards the bridge.
2. Go over the bridge. Keep following the path, you'll come to a carp park, be careful here. As you keep walking you'll need to turn right at the next bridge.
3. Keep following the path. You'll walk through some nice paths but will find yourself at another road, walk carefully along this.
4. Keep your eye out for a gate with a bin close by, turn left down here.
5. Keep following the path, this will lead you back up to the car park.



The Jumbles

This is a lovely Easter walk in the countryside, you can make it as long or as short as you like but it is also circular. There is a café and toilets at the car park.

I spy	



Moss Bank Park

This is a lovely opportunity to walk around the park and explore the different areas.

Accessing the park is great opportunity to develop gross-motor and social skills.

I spy	



Mothers Day Afternoon Tea

Thank you so much to those who attended our Mother's Day afternoon tea, it was a lovely afternoon.



The **Healthy Mind, Healthy Parenting Pathway** is designed to support parents and carers who are facing challenges with their mental well-being and want to strengthen family dynamics. This pathway provides 1:1 support for those who would benefit from practical strategies to manage stress, enhance mental health, and create a more positive home environment. Through a series of seven structured sessions, parents will receive guidance on managing stress, building resilience, and developing healthy routines that promote emotional well-being for both themselves and their children, fostering a stronger, healthier family life.

More information and the referral form is in the link below-

[Family Assist Service - Bolton Lads & Girls Club](#) . For more information please contact families@blgc.co.uk.



Woodbridge Trust Holiday List 2024-2025 – Parents

September 2024							October 2024							November 2024						
Su	Mo	Tu	We	Th	Fr	Sa	Su	Mo	Tu	We	Th	Fr	Sa	Su	Mo	Tu	We	Th	Fr	Sa
1	2	3	4	5	6	7			1	2	3	4	5						1	2
8	9	10	11	12	13	14	6	7	8	9	10	11	12	3	4	5	6	7	8	9
15	16	17	18	19	20	21	13	14	15	16	17	18	19	10	11	12	13	14	15	16
22	23	24	25	26	27	28	20	21	22	23	24	25	26	17	18	19	20	21	22	23
29	30						27	28	29	30	31			24	25	26	27	28	29	30

December 2024							January 2025							February 2025						
Su	Mo	Tu	We	Th	Fr	Sa	Su	Mo	Tu	We	Th	Fr	Sa	Su	Mo	Tu	We	Th	Fr	Sa
1	2	3	4	5	6	7				1	2	3	4							1
8	9	10	11	12	13	14	5	6	7	8	9	10	11	2	3	4	5	6	7	8
15	16	17	18	19	20	21	12	13	14	15	16	17	18	9	10	11	12	13	14	15
22	23	24	25	26	27	28	19	20	21	22	23	24	25	16	17	18	19	20	21	22
29	30	31					26	27	28	29	30	31		23	24	25	26	27	28	

March 2025							April 2025							May 2025							
Su	Mo	Tu	We	Th	Fr	Sa	Su	Mo	Tu	We	Th	Fr	Sa	Su	Mo	Tu	We	Th	Fr	Sa	
						1			1	2	3	4	5						1	2	3
2	3	4	5	6	7	8	6	7	8	9	10	11	12	4	5	6	7	8	9	10	
9	10	11	12	13	14	15	13	14	15	16	17	18	19	11	12	13	14	15	16	17	
16	17	18	19	20	21	22	20	21	22	23	24	25	26	18	19	20	21	22	23	24	
23	24	25	26	27	28	29	27	28	29	30				25	26	27	28	29	30	31	
30	31																				

June 2025							July 2025							August 2025							
Su	Mo	Tu	We	Th	Fr	Sa	Su	Mo	Tu	We	Th	Fr	Sa	Su	Mo	Tu	We	Th	Fr	Sa	
1	2	3	4	5	6	7			1	2	3	4	5						1	2	
8	9	10	11	12	13	14	6	7	8	9	10	11	12	3	4	5	6	7	8	9	
15	16	17	18	19	20	21	13	14	15	16	17	18	19	10	11	12	13	14	15	16	
22	23	24	25	26	27	28	20	21	22	23	24	25	26	17	18	19	20	21	22	23	
29	30						27	28	29	30	31			24	25	26	27	28	29	30	
														31							

The dates that are shaded in Gold are the days children and young people are not in school.

The dates that are Red are Bank Holidays.