

LADYWOOD SCHOOL

FEBRUARY 2026 NEWSLETTER

Dear Parents and carers

It has been another great few weeks at school.

The children had an amazing day with a local artist who joined us in school to deliver exciting, hands-on workshops. Their creativity and enthusiasm shone throughout the day! The artist also worked with our staff, providing specialist training to help to further enrich the curriculum and bring even more creative learning opportunities into our classrooms.

This term, one of our key priorities is to work more closely with parents to help guide and shape experiences in school. To support this, we are focusing on Class Dojo. All parents will soon receive a questionnaire designed to gain a better understanding of current practices and how we can continue to improve. Your feedback will be invaluable in helping us to shape the communication shared from class teams. Please look out for further information from our new Parental Engagement Lead, Dean Simons.

I would also like to take this opportunity to share that this academic year we have a new School Improvement Partner, who has been awarded an OBE for her outstanding work in SEND. She has recently visited school to meet our children, to review learning and to look at our Inclusive practise. We were extremely proud of the children who met her and she commented on the incredible impact of our support, saying: "The pupils thrived through the wealth of support, guidance, and nurture. They were able to articulate this and spoke of 'being loved and cared for' and that the teachers and staff did more than teach them." This is a wonderful reflection of the dedication and commitment of our staff and it highlights the nurturing environment we strive to provide for every child.

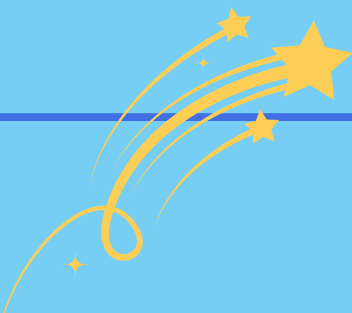
Thank you as always for your support,

Lynsey



Reminder

*School closes on Friday
13th February and re-
opens on Monday 23rd
February*



IMPORTANT INFORMATION - ALLERGY AWARE

A reminder that we are an 'Allergy Aware' school and therefore nuts should be avoided at all costs.

We have a number of children who are severely allergic to nuts and therefore these shouldn't be coming into school in any form.

Thank you for your co-operation.



Medication Reminder

A gentle reminder that any medication that needs to come into school needs to be brought by a parent/carer to Reception. Please do not send on transport. We need this medication signing into school and a medication administration form filling out by family.

Thank you.



Texting Service - Adverse Weather Conditions/School Closure

Please can we remind parents of our procedure if we need to close the school due to adverse weather conditions or for any other reason. If school is not going to be open we will make a decision and send communication out as early as we possibly can. If for any reason transport is not running, they will contact you directly.

Please ensure that the main contact number for your child is up to date at all times and check for texts or messages via class dojo on a regular basis. School closure messages will also be put on our Facebook page and our Website.

GOODBYE

We are saying goodbye and good luck to Kerry Williscroft, wishing her all the very best for the future.

Absences

If your child is absent from school, it is important that you contact school and report your child's absence otherwise it will be recorded as unauthorised.



Welcome to Lucy Pitfield who has joined our Ladywood team!

Important Information

End-of-Day Collection Time Reminder:

To help maximise learning time for all pupils, we kindly ask parents and carers to collect children promptly at 2:45pm.

Early collection will only be arranged in extenuating circumstances, agreed in advance. Parents are welcome to arrive earlier and wait outside; however, please note that children will not be brought to the door before 2:45pm. Any extenuating circumstances will be reviewed on a regular basis to ensure maximum attendance.

This approach helps us reduce interruptions to lessons and ensures pupils benefit from the full learning day. Thank you for your understanding and continued support.

LEARNING THROUGH MOTION

Please see information below for February Half Term and Sunday sessions being held at Bishop Bridgeman CE Primary School, please telephone direct to book. Parents/carers are expected to stay with their child during these sessions.

Move, Play, Develop & Explore!


Sensory Sessions

Mix of **structured** tasks and **exploratory** play.

For **Neurodiverse**, aligned with **EHCP/IEP**

Builds **confidence**,
Regulation and
Essential **sensory** and **motor** skills

 **BISHOP BRIDGEMAN C.E. PRIMARY SCHOOL**
Rupert St, Great Lever, BL3 6PY

 **EVERY SUNDAY**
09:00-12:00
45 minute sessions

**CONTACT US TODAY FOR A
FREE TRIAL SESSION!**

07356074072 info@learningthroughmotion.co.uk



2026

FEBRUARY HALF TERM SESSIONS

£15 A SESSION

- 90 Minute Sessions •
- 9-10:30 OR 10:30-12 •

16-20 FEBRUARY

JOIN NOW

 **Message To Book**

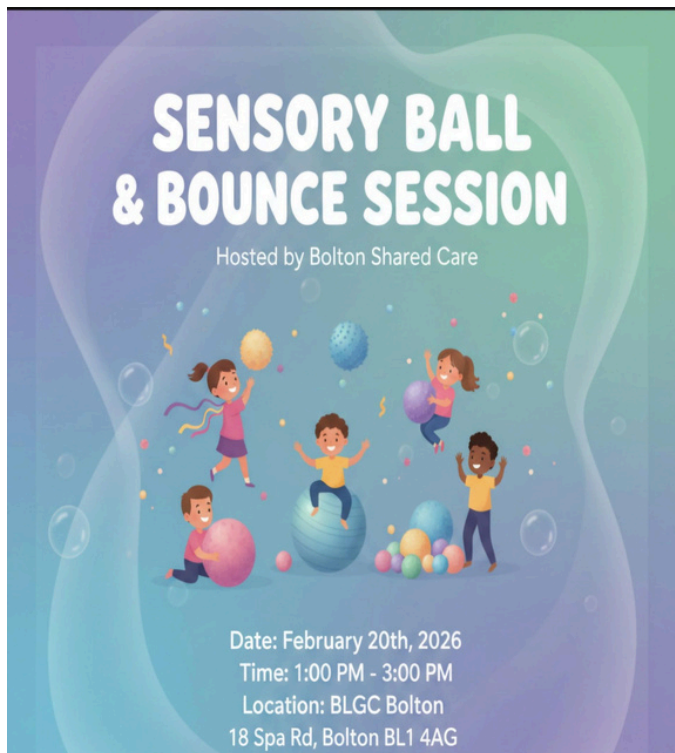
 **07356074072**

**Play
Explore
Regulate**

We are pleased to share some inclusive activities taking place over the upcoming half-term break, designed specifically for children and young people with disabilities. These sessions aim to provide fun, accessible and supportive opportunities for families during the holidays.

The ball and bounce session is free so people can just turn up but you will need to email Harry.bateman@bolton.gov.uk to secure your space.

Parents / carers are expected to stay with their child during this session.



Bingo + music x quiz / friends = Brew Bingo!

Following on from the fantastic event at Castle Hill Centre

What is Brew Bingo?

Brew Bingo is a mash up of three games of bingo, a DJ playing music, party games and an opportunity to meet friends and make new ones. The event is aimed at young people who have a disability, their families, and carers.

Where is Brew Bingo?

Brew club bingo will be held at the Castle hill centre in the breakout area.

When is Brew Bingo?

February 15th 11am-1pm

How much is Brew Bingo?

There is a £3.50 per person including carers which includes bingo and refreshments.

To find out more please email elaine.nuttall@bolton.gov.uk. Places are limited and will go quick, so book early to avoid disappointment.



**Bolton
Shared
Care**



Following our Summer term Parent Questionnaire, we have been exploring the option of introducing an additional rucksack-style bag for children at school.

Children will continue to receive a free Reading Bag at the start of their time at Ladywood; however, there will also be an optional rucksack available for parents to purchase, which can hold more items.

Further information will follow soon.



SEND Local Offer Website

Are you aware what's available for your child? The SEND Local Offer is there to provide a single point for information to help families access details about services available to them, and offer guidance in multiple areas. Please click on the link below for further information.

<https://www.bolton.gov.uk/sendlocaloffer/>



To celebrate Valentines Day we are offering a Valentines Disco for all of the children at Ladywood. Children will also be completing a variety of activities linked to the love of others, love of learning and love of Ladywood. This will form a lovely display in our school. A heart will be sent home with all children for you to write what you love about Ladywood, this can be sent back after half term.

There is also a QR code if you would like to add it electronically
<https://padlet.com/dakins3/what-we-love-about-ladywood-8ewqba0qcth4qsd>

Look out for our 'What we Love About Ladywood' display on your next visit to school!

Ladywood Social Media

To keep up to date with all our latest news, please follow us on our various social media platforms.

Ladywood Blog

Please don't forget to check the blog for daily/weekly updates on the children's learning and all the exciting activities that have been happening around school. The blog is a great way for everyone to communicate and to keep up to date.

<http://blog.ladywood.bolton.sch.uk/>



Social Media at Ladywood

Join us on our new Facebook page!



Twitter



Instagram



OPERATION ENCOMPASS

Operation Encompass is a national scheme that operates jointly between schools and all police forces.

“ Children who live in homes where there is domestic abuse, or who experience domestic abuse in their own teenage relationships, can be negatively impacted by this experience. ”

“ Children who experience domestic abuse are recognised as victims of domestic abuse in their own right! ”

“ We have ensured that a member of our staff, (Designated Safeguarding Lead) known as a Key Adult, has been trained about Operation Encompass procedures. This allows us to use the information that has been confidentially shared with us by the police, to understand how a child may be impacted by domestic abuse and to then offer support to the child/ren in our care. ”

“ Operation Encompass means that our school will be told, prior to the start of the next school day, when police have attended an incident of domestic abuse where there is a child or young person who attends our school who is related to any of those involved in the incident. ”

“ This information means that we can understand a child's behaviour and support that child in whatever way they may need or want. ”

“ We are keen to offer the very best support possible to all our pupils and we believe that being part of Operation Encompass helps us to do this. ”

© Domestic Abuse Act 2021

www.operationencompass.org

Operation Encompass

Ladywood School is in partnership with Bolton Safeguarding Board and Greater Manchester Police in a project called “Bolton Encompass”. The project is designed to provide support for children who may be impacted on by domestic violence. Information from Encompass will be shared with school who will ensure that appropriate supportive strategies are put in place.

To access the Operation Encompass website, please click on the link below: <https://www.operationencompass.org/>

SAFER INTERNET DAY

Tuesday 10th February was Internet Safety Day in school. The children took part in a fun learning opportunity aimed at teaching children all about staying safe online, particularly around AI. See Useful Resources/Links below.



Useful Resources/Links



Google Family Link

Parental control app that allows parents to monitor screen time, approve app downloads, set daily limits, restrict content, and locate their children's devices.



UK Safer Internet Centre

<https://saferinternet.org.uk/guide-and-resource/parents-and-carers>

Tips, advice, guides and resources to help keep your child safe online

Attendance Awareness for Families

Ladywood is committed to promoting and maintaining high levels of attendance and punctuality, to ensure the best outcomes for all our children.

It is therefore a Parent's/Carer's responsibility to:

- Ensure your child is in school by 9:30 am and picked up no earlier than 2:30 pm unless you have an appointment (please arrange appointments outside school hours where possible)
- Report absences by 8:30 am and provide medical evidence when required
- Provide the setting with more than 1 emergency contact number

Authorised Absence Includes:

- Illness and medical/dental appointments (please make school aware of these in advance)
- Religious observance for 1 day
- Other possible 'exceptional circumstances' where the Head may grant term-time holiday. However if this is unauthorised due to attendance then a fine may be incurred.

Leave of Absence MUST be completed at least 2 weeks prior to a holiday or this will be considered UNAUTHORISED. We cannot complete this paperwork after the trip has occurred.

Unauthorised Absence could incur a Penalty Notice and fines starting from £80 up to £160. Further unauthorised absence could lead to Legal Action.

Unexplained Absence - where any pupil we expect to attend school does not attend, or stops attending, without reason, the school will:

- Day 1 and/or Day 2: Contact parents/carers by telephone to confirm a pupil's absence
- Day 3: If a pupil is still absent, and we have been unable to contact a parent/carers, a home visit will be completed.

If your child's attendance falls below 90% you may be notified in writing.

If your child's attendance falls below 80% you may be offered an attendance review meeting to discuss any support required.

We endeavour to support all our children in having a positive attendance. Should you require any further support please do not hesitate to contact school and we would be happy to work with yourselves to improve attendance.

Internet Safety - Supporting Safe Use of AI

At The National College, our WakeUpWednesday guides empower and equip parents, carers and educators with the confidence and practical skills to be able to have informed and age-appropriate conversations with children about online safety, mental health and wellbeing, and climate change. Formerly delivered by National Online Safety, these guides now address wider topics and themes. For further guides, hints and tips, please visit [nationalcollege.com](https://www.thenationalcollege.com).

10 Top Tips for Parents and Educators SUPPORTING SAFE USE OF AI

Artificial intelligence (AI) is increasingly woven into young people's digital lives. It can offer some educational benefits and day-to-day assistance; however, it also raises concerns about misinformation, privacy, fairness, and safety. This guide provides parents and educators with practical strategies to support young people to navigate AI tools responsibly, and to use them safely and with discernment.

1 DEMYSTIFY WHAT AI REALLY IS

Children encounter AI in most online places, including games, streaming platforms, and school tools. Explain that AI uses patterns from past data to make decisions, but it doesn't think or feel like humans. Use age-appropriate examples, like how recommendations on YouTube or Netflix work, to build understanding and prevent false beliefs about AI being all-knowing or alive.

2 TALK ABOUT RISKS OF MISINFORMATION

AI can create convincing false information, including deepfake videos, photos, and fake "facts". Encourage children to think critically about what they see and read. Teach them to double-check information using reliable sources, to look at images and videos carefully, and to ask an adult if something doesn't seem right.

3 DISCUSS DATA AND PRIVACY

Explain that AI systems learn by analysing lots of data, sometimes including personal information. Help young people to be mindful of what they share online and why protecting personal data matters. Model good habits like reading app permissions together or reviewing what's collected by voice assistants like Alexa or Siri.

4 ENCOURAGE CREATIVE USE OF AI

Support children, when using AI tools, to explore ideas, make art, or build projects. This fosters confidence, imagination, and independent thinking. When children use AI creatively, rather than just passively consuming it, they are more likely to stay engaged and make thoughtful choices.

5 USE AGE-APPROPRIATE AI TOOLS

Not all AI platforms are suitable for children. Choose tools designed for education or creativity, with clear safety policies. Review terms of use and privacy settings, and help children use them in age-appropriate ways. For example, some chatbot tools mimic conversation but should only be used with guidance and boundaries in place.

6 USE AI TOGETHER

Exploring AI tools together can help adults understand how they work and spot potential issues. Try co-writing a story with an AI writing assistant or experimenting with an AI art tool. This encourages curiosity, helps you stay informed about the latest AI tools, and allows you to reinforce safe and respectful use while modelling critical thinking.

7 SET BOUNDARIES FOR AI USE

Establish when, where, and how AI tools can be used, just as you would with any digital technology. For example, you might agree not to use AI tools to complete school assignments without permission, or to avoid unsupervised use of voice assistants. Consistent boundaries help manage overuse and misuse.

8 WATCH FOR OVERRELIANCE

Some AI tools, like homework help apps, may be tempting shortcuts. Encourage children to use AI to support their thinking, not replace it. Celebrate effort and process over perfect answers. Reinforce that mistakes are part of learning and that relying too heavily on AI can limit real understanding.

9 TEACH DIGITAL ETHICS AND LITERACY

Help children explore how AI works, where it might be biased, and why ethical thinking matters. Building digital literacy alongside ethical awareness ensures children engage with AI critically, not just conveniently. Help young people to understand that not all people use AI for legitimate purposes; some use it for malicious reasons. Encourage questions about fairness, representation, and who benefits from certain tools; talk about algorithms, echo chambers, and the impact of automation on daily life.

10 STAY CURIOUS AND INVOLVED

AI is developing rapidly, and staying informed helps you support the young people in your care. Follow trusted sources for updates and keep the conversation going. If a child brings up a new AI trend or tool, take the opportunity to learn about it together. Sharing interest builds trust and strengthens digital resilience.

Meet Our Expert

Home to the world's largest CPD library for educators, The National College has transformed the way education establishments go about developing their workforces and managing compliance. Our three memberships help all phases and types of setting raise standards, save time, reduce risk, and build a culture of improvement.

#WakeUpWednesday

The National College

X @wake_up_weds

f /www.thenationalcollege

@wake.up.wednesday

@wake.up.weds

Users of this guide do so at their own discretion. No liability is entered into. Current as of the date of release: 04.02.2025



September 2025							October 2025							November 2025										
Wk	Mo	Tu	We	Th	Fr	Sa	Su	Wk	Mo	Tu	We	Th	Fr	Sa	Su	Wk	Mo	Tu	We	Th	Fr	Sa	Su	
36	1	2	3	4	5	6	7	40			1	2	3	4	5	44							1	2
37	8	9	10	11	12	13	14	41	6	7	8	9	10	11	12	45	3	4	5	6	7	8	9	
38	15	16	17	18	19	20	21	42	13	14	15	16	17	18	19	46	10	11	12	13	14	15	16	
39	22	23	24	25	26	27	28	43	20	21	22	23	24	25	26	47	17	18	19	20	21	22	23	
40	29	30						44	27	28	29	30	31			48	24	25	26	27	28	29	30	

December 2025							January 2026							February 2026									
Wk	Mo	Tu	We	Th	Fr	Sa	Su	Wk	Mo	Tu	We	Th	Fr	Sa	Su	Wk	Mo	Tu	We	Th	Fr	Sa	Su
49	1	2	3	4	5	6	7	1				1	2	3	4	5							1
50	8	9	10	11	12	13	14	2	5	6	7	8	9	10	11	6	2	3	4	5	6	7	8
51	15	16	17	18	19	20	21	3	12	13	14	15	16	17	18	7	9	10	11	12	13	14	15
52	22	23	24	25	26	27	28	4	19	20	21	22	23	24	25	8	16	17	18	19	20	21	22
1	29	30	31					5	26	27	28	29	30	31	9	23	24	25	26	27	28		

March 2026							April 2026							May 2026										
Wk	Mo	Tu	We	Th	Fr	Sa	Su	Wk	Mo	Tu	We	Th	Fr	Sa	Su	Wk	Mo	Tu	We	Th	Fr	Sa	Su	
9							1	14			1	2	3	4	5	18						1	2	3
10	2	3	4	5	6	7	8	15	6	7	8	9	10	11	12	19	4	5	6	7	8	9	10	
11	9	10	11	12	13	14	15	16	13	14	15	16	17	18	19	20	11	12	13	14	15	16	17	
12	16	17	18	19	20	21	22	17	20	21	22	23	24	25	26	21	18	19	20	21	22	23	24	
13	23	24	25	26	27	28	29	18	27	28	29	30			22	25	26	27	28	29	30	31		
14	30	31																						

June 2026							July 2026							August 2026										
Wk	Mo	Tu	We	Th	Fr	Sa	Su	Wk	Mo	Tu	We	Th	Fr	Sa	Su	Wk	Mo	Tu	We	Th	Fr	Sa	Su	
23	1	2	3	4	5	6	7	27			1	2	3	4	5	31							1	2
24	8	9	10	11	12	13	14	28	6	7	8	9	10	11	12	32	3	4	5	6	7	8	9	
25	15	16	17	18	19	20	21	29	13	14	15	16	17	18	19	33	10	11	12	13	14	15	16	
26	22	23	24	25	26	27	28	30	20	21	22	23	24	25	26	34	17	18	19	20	21	22	23	
27	29	30						31	27	28	29	30	31			35	24	25	26	27	28	29	30	
															36	31								

The dates that are shaded in Gold are the days children and young people are not in school.

The dates written in Red are Bank Holidays



Woodbridge Trust Holiday List 2026-2027

September 2026							October 2026							November 2026									
Wk	Mo	Tu	We	Th	Fr	Sa	Su	Wk	Mo	Tu	We	Th	Fr	Sa	Su	Wk	Mo	Tu	We	Th	Fr	Sa	Su
36		1	2	3	4	5	6	40				1	2	3	4	44							1
37	7	8	9	10	11	12	13	41	5	6	7	8	9	10	11	45	2	3	4	5	6	7	8
38	14	15	16	17	18	19	20	42	12	13	14	15	16	17	18	46	9	10	11	12	13	14	15
39	21	22	23	24	25	26	27	43	19	20	21	22	23	24	25	47	16	17	18	19	20	21	22
40	28	29	30					44	26	27	28	29	30	31	48	23	24	25	26	27	28	29	
															49	30							

December 2026							January 2027							February 2027									
Wk	Mo	Tu	We	Th	Fr	Sa	Su	Wk	Mo	Tu	We	Th	Fr	Sa	Su	Wk	Mo	Tu	We	Th	Fr	Sa	Su
49		1	2	3	4	5	6	53					1	2	3	5	1	2	3	4	5	6	7
50	7	8	9	10	11	12	13	1	4	5	6	7	8	9	10	6	8	9	10	11	12	13	14
51	14	15	16	17	18	19	20	2	11	12	13	14	15	16	17	7	15	16	17	18	19	20	21
52	21	22	23	24	25	26	27	3	18	19	20	21	22	23	24	8	22	23	24	25	26	27	28
53	28	29	30	31				4	25	26	27	28	29	30	31								

March 2027							April 2027							May 2027										
Wk	Mo	Tu	We	Th	Fr	Sa	Su	Wk	Mo	Tu	We	Th	Fr	Sa	Su	Wk	Mo	Tu	We	Th	Fr	Sa	Su	
9	1	2	3	4	5	6	7	13				1	2	3	4	17							1	2
10	8	9	10	11	12	13	14	14	5	6	7	8	9	10	11	18	3	4	5	6	7	8	9	
11	15	16	17	18	19	20	21	15	12	13	14	15	16	17	18	19	10	11	12	13	14	15	16	
12	22	23	24	25	26	27	28	16	19	20	21	22	23	24	25	20	17	18	19	20	21	22	23	
13	29	30	31					17	26	27	28	29	30			21	24	25	26	27	28	29	30	
															22	31								

June 2027							July 2027							August 2027									
Wk	Mo	Tu	We	Th	Fr	Sa	Su	Wk	Mo	Tu	We	Th	Fr	Sa	Su	Wk	Mo	Tu	We	Th	Fr	Sa	Su
22		1	2	3	4	5	6	26				1	2	3	4	30							1
23	7	8	9	10	11	12	13	27	5	6	7	8	9	10	11	31	2	3	4	5	6	7	8
24	14	15	16	17	18	19	20	28	12	13	14	15	16	17	18	32	9	10	11	12	13	14	15
25	21	22	23	24	25	26	27	29	19	20	21	22	23	24	25	33	16	17	18	19	20	21	22
26	28	29	30					30	26	27	28	29	30	31	34	23	24	25	26	27	28	29	
															35	30	31						

The dates that are shaded in Gold are the days children and young people are not in school.

The dates written in Red are Bank Holiday