



LADYWOOD SCHOOL

SUMMER NEWSLETTER 2025

Dear Parents and Carers,

We have had a lovely final half term celebrating our wonderful Y6 leavers and celebrating our EYFS graduation. Thank you also to everyone who supported the Summer fair - it was lovely to see so many families in attendance.

You should already have received a letter to share that this is my final week at Ladywood as Head Teacher, as I will be moving to a full time role within the Trust. Once again, I would just like to take the opportunity to say a huge thank you for everyone's support. I am very much going to miss seeing your amazing children every day as they have left me with so many fond memories of my years at Ladywood. Our current Deputy Head Teacher, Lynsey Brierley, will be taking on the role of Acting Head Teacher from 1st September and the permanent position will be appointed at the end of the Spring term. Lynsey has worked at Ladywood for many years and knows the children and families very well and I wish her the very best in the new term.

Have a wonderful Summer break,
Susan



Reminder

Please note school closes at the **earlier time of 2.00 pm** on Friday 18th July and re-opens on Wednesday 3rd September



Happy Retirement!

We are wishing a very happy retirement to Mandy Fardoe, Joanne Collins and Jacqui Grady - wishing you all the very best.



Goodbye & Good Luck!

We are saying goodbye and good luck to Sam Pickavance, Julie Chadwick, Tim Earnshaw, Kay Kane, Paula Ashworth, Julie Shepherd, Sue Whittle and Ellie Berry - wishing them all the very best for the future.



Summer water safety

Accidents are mostly preventable with the correct knowledge and judgment and here are our tips to staying safe in the water during the summer:

To enjoy the water safely and make the right call...

- **Enter slowly and carefully**
Think carefully about your ability to splash or swim in cold outdoor water. 49% of those who lost their life were classified as swimmers*. Are you really a good swimmer?
- **Stay within reach**
Don't go too far and stay within a standing depth.
- **Always be supervised**
Over 70% of fatal accidents occur in the absence of professional supervision. Seek life guarded areas and always make sure some one is available to raise the alarm.

Summer is an amazing time to enjoy our beautiful waterways but we must be mindful that warmer weather is directly linked to an increase in fatal drowning incidents.

Rivers and Lakes/Lochs pose the greatest statistical risk as there are often hazards that the average person is equipped to handle and there is a lack of professional supervision.

In an emergency...

- **Call 999**
If you are at the coast, call 999 and ask for the Coastguard. Don't enter the water to rescue.
- **If you're in trouble FLOAT and call for help**
Fall in or become tired – stay calm, float on your back and call for help. Throw something that floats to somebody that has fallen in.



STOP AND THINK



STAY TOGETHER



CALL 999



FLOAT





My Mentor Dog and Me



We have had a wonderful month celebrating
My Mentor Dog and Me!

All classes have had opportunities to engage in a range of
different wellbeing activities with Sully over the last four weeks.

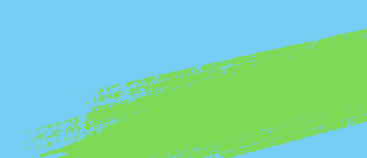


We have made Sully
delicious treats and
made him very happy
when we gave them to
him!

One of our favourite activities
was taking Sully on the track to
be active, we also connected
with friends and took notice
using our senses.



We have written to Sully
sharing things we wish he
knew, we have also read a
variety of books linked to
dogs too! Sully has kept
learning through our trick
workshops!



You said ...

Ladywood is an excellent school for my child. They love all the children that attend and the staff are fantastic

Such an amazing school. They make every day special and take good care of my daughter. Could not think of a better school!

All the staff are absolutely amazing and my son loves going to school.

I love how happy my son is at school.

The school communicates well with parents; we are included in lots of activities within the school, e.g. muffins with Mum, doughnuts with Dad, etc. It's amazing to watch my son progress and development. He has achieved so much and his verbal skills are vastly improving also.

The school gives updates about progress for my daughter every term

Absolutely everything, the care and understanding with the children is second to none and sets a perfect example of how my daughter should strive to carry herself as she gets older

I love that I'm at peace when my son is in school and how quickly his teachers are able and happily willing to adapt to his changes and needs. The communication between his teachers and us is simply remarkable.

The best for the child ... they do an amazing job and always put the child first. The resources they have are fantastic. It's just an outstanding school and I'm privileged my child is there.

Nurture & Nature. They are able to bring trust and nurturing relationships with my son. Which has meant growth for him. They make it look easy but I know that they do is complex and a lot of work. My son is and will continue to thrive under the guide of the whole team at Ladywood. The reception staff know every child by name even without seeing them. It's clear that it's a whole team approach.

Ladywood provide a nurturing environment with targeted learning to help my child reach their full potential. School arranges fun activities which my child enjoys immensely and is good for their physical and mental well being.

Excellent extracurricular enhancements and the school provide a nurturing environment where self-expression is encouraged.

Amazing staff who really get the best from our son. He is cared for and has an individual plan catered to his needs. Friendly staff who respond quickly to any messages via Dojo

Communication from the school is excellent.

Go above and beyond to help our little ones and it is hard. They're amazing

Ladywood does everything to a very high standard.

You asked for We listened

More information about speech and language groups also, extra Speech and Language groups or classes for my daughter

We have introduced a new TA4 Communication role who will support classes to implement more communication based interventions.

Back packs or pump bags rather than book bags.

School will explore further alternatives to the Ladywood book bag.

Regular updates on my child's day/week

New Social Media platform planned for September - more information to follow in the September Newsletter.

More notice on events and information.

Calendar of events to be shared termly.

2 to 3 class dojo messages to be sent every week.

Operation Encompass

Ladywood School is in partnership with Bolton Safeguarding Board and Greater Manchester Police in a project called “Bolton Encompass”. The project is designed to provide support for children who may be impacted on by domestic violence. Information from Encompass will be shared with school who will ensure that appropriate supportive strategies are put in place.

To access the Operation Encompass website, please click on the link below: <https://www.operationencompass.org/>



Operation Encompass is a national scheme that operates jointly between schools and all police forces.

“ Children who live in homes where there is domestic abuse, or who experience domestic abuse in their own teenage relationships, can be negatively impacted by this experience. ”

“ Children who experience domestic abuse are recognised as victims of domestic abuse in their own right¹. ”

“ We have ensured that a member of our staff, (Designated Safeguarding Lead) known as a Key Adult, has been trained about Operation Encompass procedures. This allows us to use the information that has been confidentially shared with us by the police, to understand how a child may be impacted by domestic abuse and to then offer support to the child/ren in our care. ”

“ Operation Encompass means that our school will be told, prior to the start of the next school day, when police have attended an incident of domestic abuse where there is a child or young person who attends our school who is related to any of those involved in the incident. ”

“ This information means that we can understand a child’s behaviour and support that child in whatever way they may need or want. ”

“ We are keen to offer the very best support possible to all our pupils and we believe that being part of Operation Encompass helps us to do this. ”

¹ Domestic Abuse Act 2021

www.operationencompass.org

SEND Local Offer Website

Are you aware what’s available for your child? The SEND Local Offer is there to provide a single point for information to help families access details about services available to them, and offer guidance in multiple areas. Please click on the link below for further information.

<https://www.bolton.gov.uk/sendlocaloffer/>

Attendance Awareness for Families

Ladywood is committed to promoting and maintaining high levels of attendance and punctuality, to ensure the best outcomes for all our children.

It is therefore a Parent's/Carer's responsibility to:

- Ensure your child is in school by 9:30 am and picked up no earlier than 2:30 pm unless you have an appointment (please arrange appointments outside school hours where possible)
- Report absences by 8:30 am and provide medical evidence when required
- Provide the setting with more than 1 emergency contact number

Authorised Absence Includes:

- Illness and medical/dental appointments (please make school aware of these in advance)
- Religious observance for 1 day
- Other possible 'exceptional circumstances' where the Head may grant term-time holiday. However if this is unauthorised due to attendance then a fine may be incurred.

Leave of Absence MUST be completed at least 2 weeks prior to a holiday or this will be considered UNAUTHORISED. We cannot complete this paperwork after the trip has occurred.

Unauthorised Absence could incur a Penalty Notice and fines starting from £80 up to £160. Further unauthorised absence could lead to Legal Action.

Unexplained Absence - where any pupil we expect to attend school does not attend, or stops attending, without reason, the school will:

- Day 1 and/or Day 2: Contact parents/carers by telephone to confirm a pupil's absence
- Day 3: If a pupil is still absent, and we have been unable to contact a parent/carer, a home visit will be completed.

If your child's attendance falls below 90% you may be notified in writing.

If your child's attendance falls below 80% you may be offered an attendance review meeting to discuss any support required.

We endeavour to support all our children in having a positive attendance. Should you require any further support please do not hesitate to contact school and we would be happy to work with yourselves to improve attendance.

Woodbridge Trust Holiday List 2024-2025 – Parents

September 2024							October 2024							November 2024						
Su	Mo	Tu	We	Th	Fr	Sa	Su	Mo	Tu	We	Th	Fr	Sa	Su	Mo	Tu	We	Th	Fr	Sa
1	2	3	4	5	6	7			1	2	3	4	5						1	2
8	9	10	11	12	13	14	6	7	8	9	10	11	12	3	4	5	6	7	8	9
15	16	17	18	19	20	21	13	14	15	16	17	18	19	10	11	12	13	14	15	16
22	23	24	25	26	27	28	20	21	22	23	24	25	26	17	18	19	20	21	22	23
29	30						27	28	29	30	31			24	25	26	27	28	29	30

December 2024							January 2025							February 2025						
Su	Mo	Tu	We	Th	Fr	Sa	Su	Mo	Tu	We	Th	Fr	Sa	Su	Mo	Tu	We	Th	Fr	Sa
1	2	3	4	5	6	7				1	2	3	4							1
8	9	10	11	12	13	14	5	6	7	8	9	10	11	2	3	4	5	6	7	8
15	16	17	18	19	20	21	12	13	14	15	16	17	18	9	10	11	12	13	14	15
22	23	24	25	26	27	28	19	20	21	22	23	24	25	16	17	18	19	20	21	22
29	30	31					26	27	28	29	30	31		23	24	25	26	27	28	

March 2025							April 2025							May 2025						
Su	Mo	Tu	We	Th	Fr	Sa	Su	Mo	Tu	We	Th	Fr	Sa	Su	Mo	Tu	We	Th	Fr	Sa
						1			1	2	3	4	5					1	2	3
2	3	4	5	6	7	8	6	7	8	9	10	11	12	4	5	6	7	8	9	10
9	10	11	12	13	14	15	13	14	15	16	17	18	19	11	12	13	14	15	16	17
16	17	18	19	20	21	22	20	21	22	23	24	25	26	18	19	20	21	22	23	24
23	24	25	26	27	28	29	27	28	29	30				25	26	27	28	29	30	31
30	31																			

June 2025							July 2025							August 2025						
Su	Mo	Tu	We	Th	Fr	Sa	Su	Mo	Tu	We	Th	Fr	Sa	Su	Mo	Tu	We	Th	Fr	Sa
1	2	3	4	5	6	7			1	2	3	4	5						1	2
8	9	10	11	12	13	14	6	7	8	9	10	11	12	3	4	5	6	7	8	9
15	16	17	18	19	20	21	13	14	15	16	17	18	19	10	11	12	13	14	15	16
22	23	24	25	26	27	28	20	21	22	23	24	25	26	17	18	19	20	21	22	23
29	30						27	28	29	30	31			24	25	26	27	28	29	30
														31						

The dates that are shaded in Gold are the days children and young people are not in school.

The dates that are Red are Bank Holidays.

HOLIDAY LIST 2025-2026 PUPILS



September 2025							
Wk	Mo	Tu	We	Th	Fr	Sa	Su
36	1	2	3	4	5	6	7
37	8	9	10	11	12	13	14
38	15	16	17	18	19	20	21
39	22	23	24	25	26	27	28
40	29	30					

October 2025							
Wk	Mo	Tu	We	Th	Fr	Sa	Su
40			1	2	3	4	5
41	6	7	8	9	10	11	12
42	13	14	15	16	17	18	19
43	20	21	22	23	24	25	26
44	27	28	29	30	31		

November 2025							
Wk	Mo	Tu	We	Th	Fr	Sa	Su
44						1	2
45	3	4	5	6	7	8	9
46	10	11	12	13	14	15	16
47	17	18	19	20	21	22	23
48	24	25	26	27	28	29	30

December 2025							
Wk	Mo	Tu	We	Th	Fr	Sa	Su
49	1	2	3	4	5	6	7
50	8	9	10	11	12	13	14
51	15	16	17	18	19	20	21
52	22	23	24	25	26	27	28
1	29	30	31				

January 2026							
Wk	Mo	Tu	We	Th	Fr	Sa	Su
1				1	2	3	4
2	5	6	7	8	9	10	11
3	12	13	14	15	16	17	18
4	19	20	21	22	23	24	25
5	26	27	28	29	30	31	

February 2026							
Wk	Mo	Tu	We	Th	Fr	Sa	Su
5							1
6	2	3	4	5	6	7	8
7	9	10	11	12	13	14	15
8	16	17	18	19	20	21	22
9	23	24	25	26	27	28	

March 2026							
Wk	Mo	Tu	We	Th	Fr	Sa	Su
9							1
10	2	3	4	5	6	7	8
11	9	10	11	12	13	14	15
12	16	17	18	19	20	21	22
13	23	24	25	26	27	28	29
14	30	31					

April 2026							
Wk	Mo	Tu	We	Th	Fr	Sa	Su
14			1	2	3	4	5
15	6	7	8	9	10	11	12
16	13	14	15	16	17	18	19
17	20	21	22	23	24	25	26
18	27	28	29	30			

May 2026							
Wk	Mo	Tu	We	Th	Fr	Sa	Su
18					1	2	3
19	4	5	6	7	8	9	10
20	11	12	13	14	15	16	17
21	18	19	20	21	22	23	24
22	25	26	27	28	29	30	31

June 2026							
Wk	Mo	Tu	We	Th	Fr	Sa	Su
23	1	2	3	4	5	6	7
24	8	9	10	11	12	13	14
25	15	16	17	18	19	20	21
26	22	23	24	25	26	27	28
27	29	30					

July 2026							
Wk	Mo	Tu	We	Th	Fr	Sa	Su
27			1	2	3	4	5
28	6	7	8	9	10	11	12
29	13	14	15	16	17	18	19
30	20	21	22	23	24	25	26
31	27	28	29	30	31		

August 2026							
Wk	Mo	Tu	We	Th	Fr	Sa	Su
31						1	2
32	3	4	5	6	7	8	9
33	10	11	12	13	14	15	16
34	17	18	19	20	21	22	23
35	24	25	26	27	28	29	30
36	31						

The dates that are shaded in Gold are the days children and young people are not in school.

The dates written in Red are Bank Holidays